

**iesha homes**

*Affordable Architectural Homes*

**IESHA EXPORT**

INFORMATION PACK 2017

PRESENTED BY: JON BENELLE  
IESHA BELLINGEN PTY LTD  
623 PROMISED LAND ROAD GLENIFFER



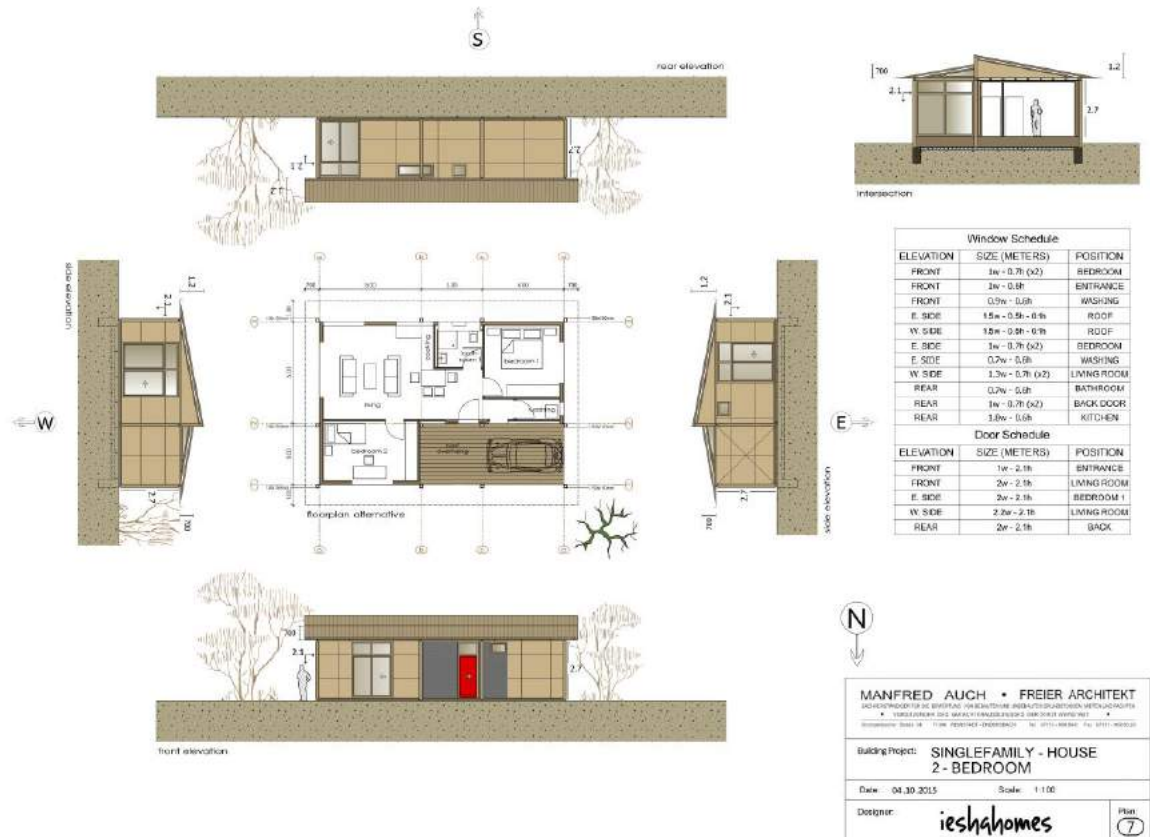
## 2. Layout Plans of IESHAHOMES 2017/18 range.

1 Bedroom full roof / Curve Roof:



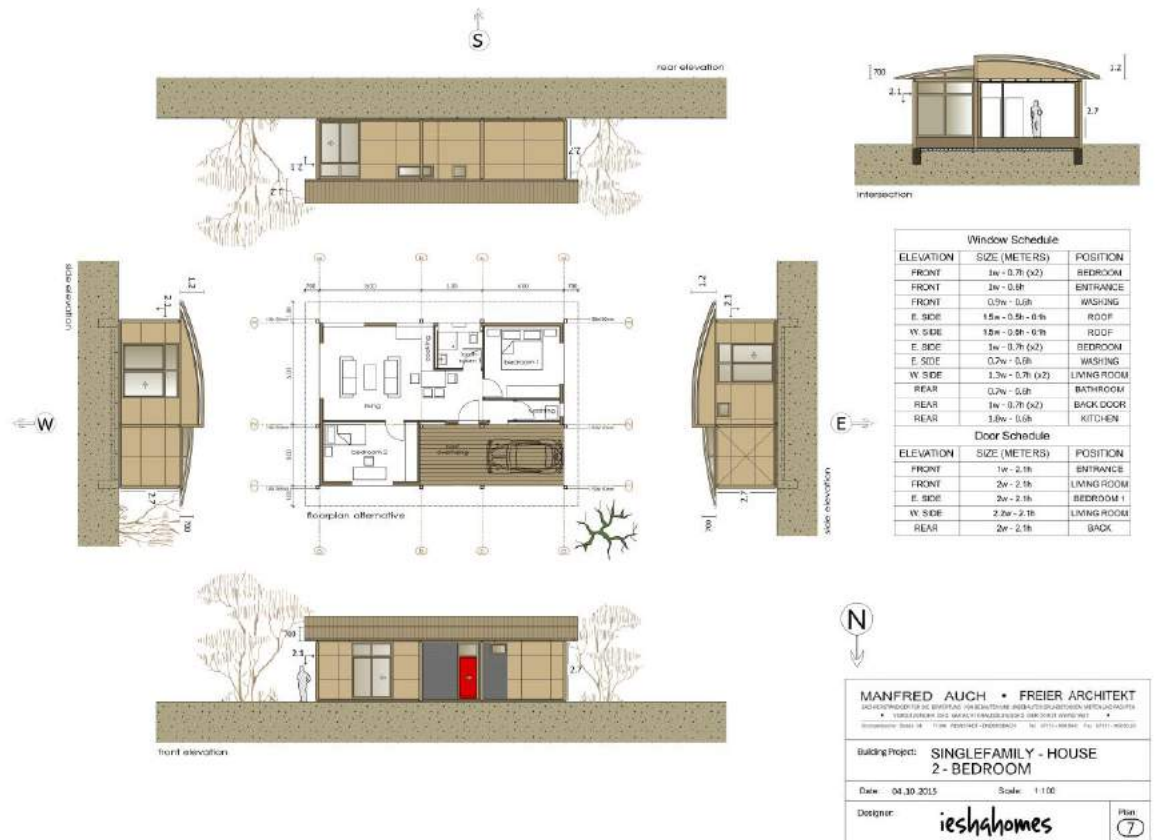
## 3. Layout Plans of IESHAHOMES 2017/18 range.

## 2 Bedroom Flat Roof:



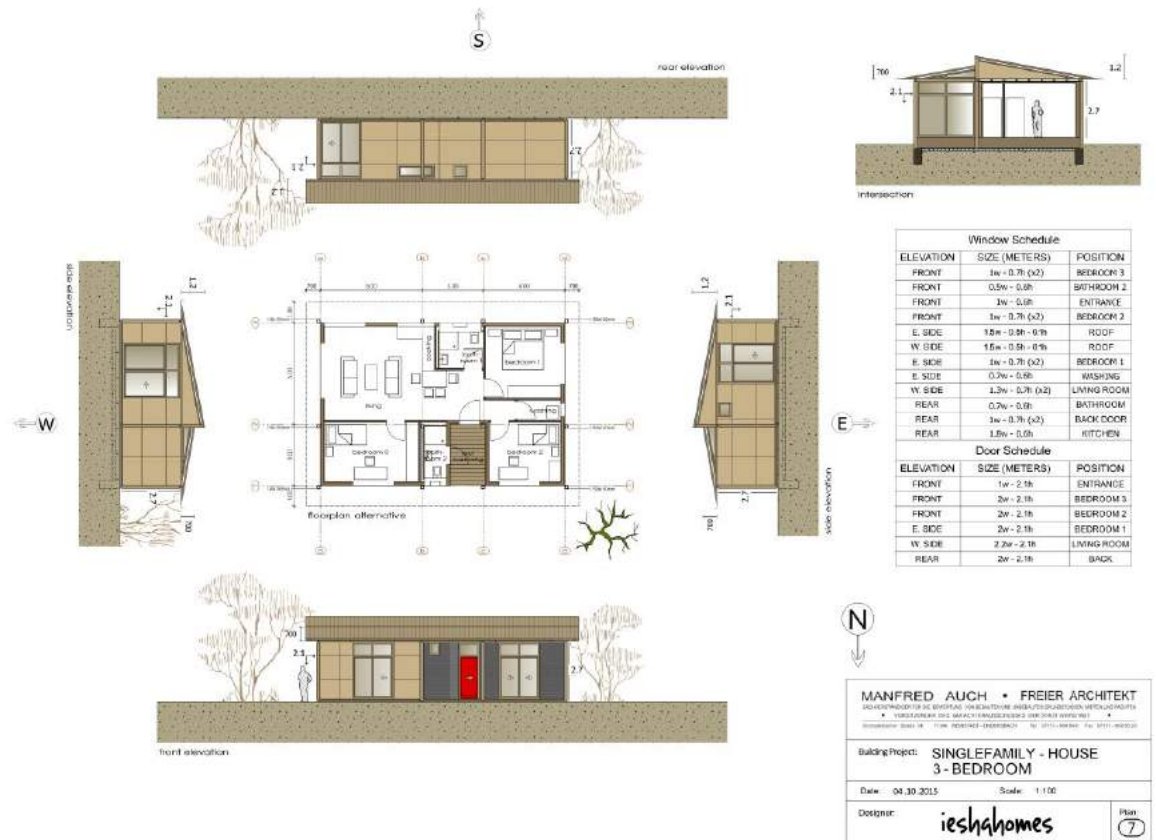
## 4. Layout Plans of IESHAHOMES 2017/18 range.

## 2 Bedroom /Curved Roof:



## 5. Layout Plans of IESHAHOMES 2017/18 range.

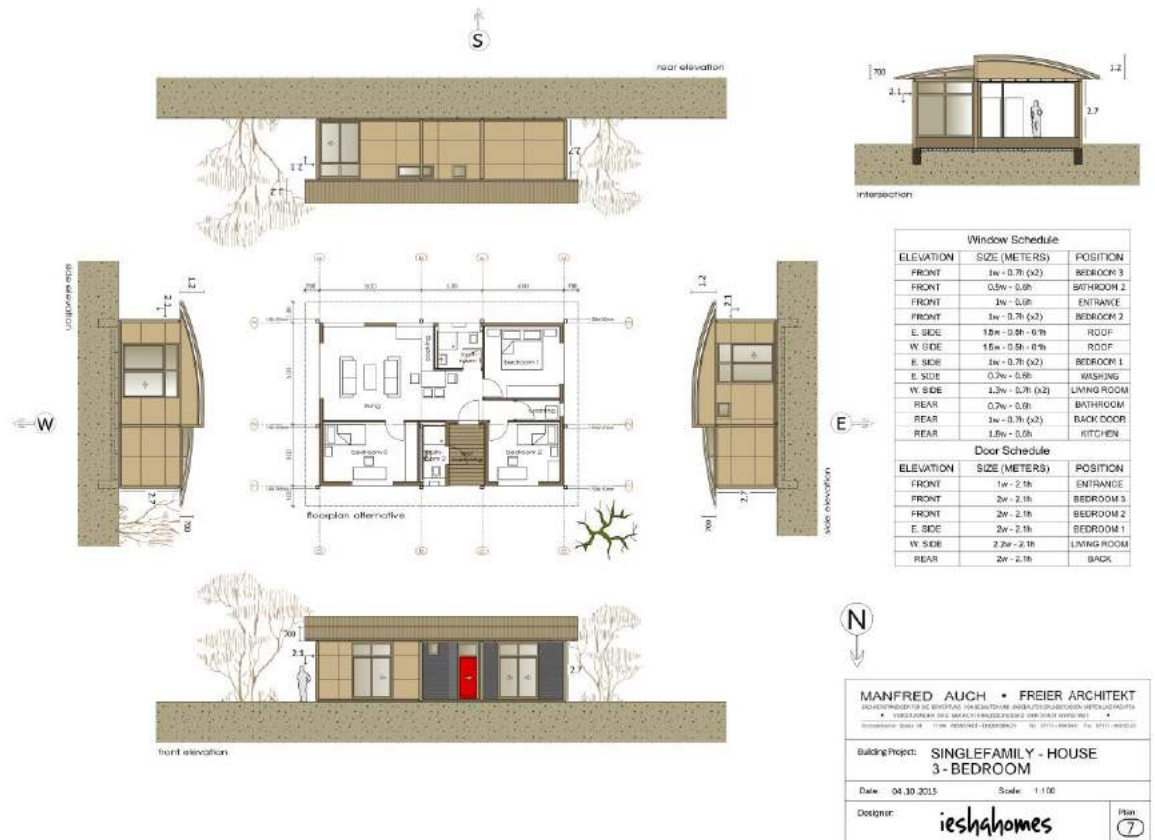
3 Bedroom / Flat Roof:





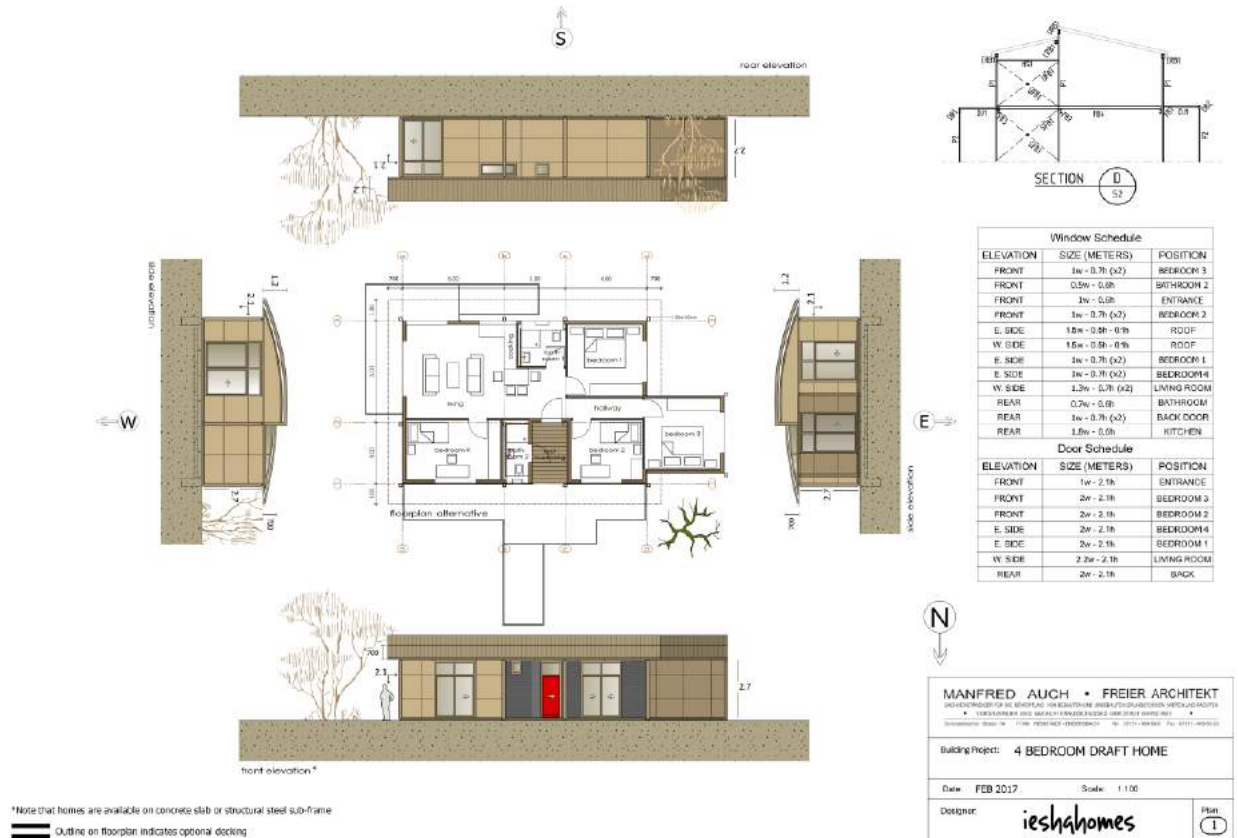
## 6. Layout Plans of IESHAHOMES 2017/18 range.

## 3 Bedroom /Curved Roof:



## 7. Layout Plans of IESHAHOMES 2017/18 range.

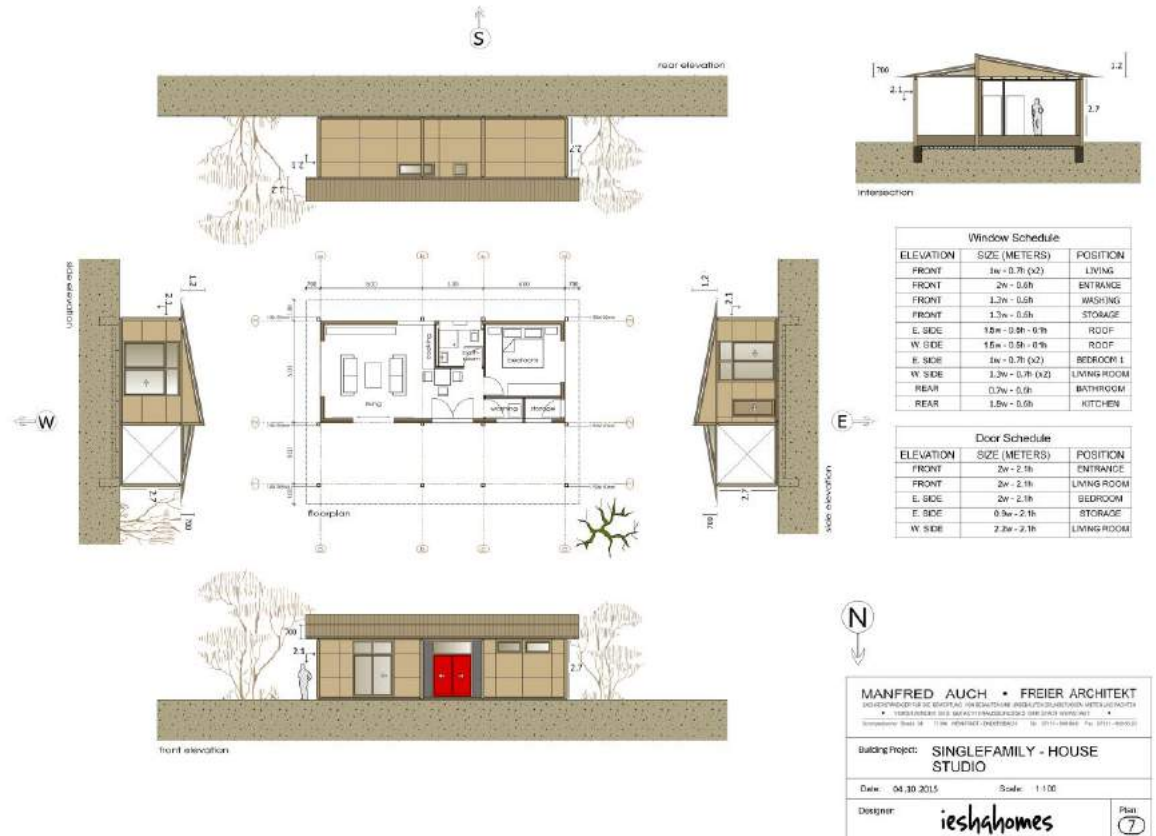
## 4 Bedroom /Flat Roof:





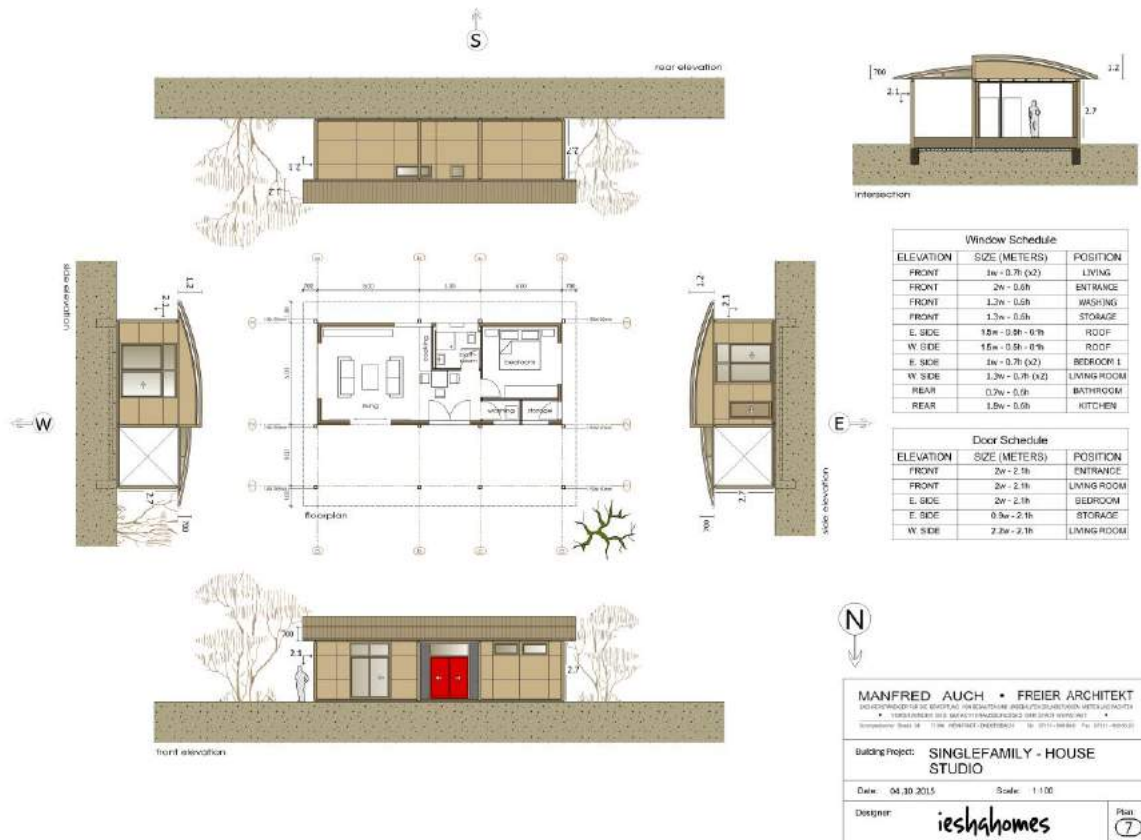
## 8. Layout Plans of IESHAHOMES 2017/18 range.

## Granny Flat Studio A / Flat Roof:



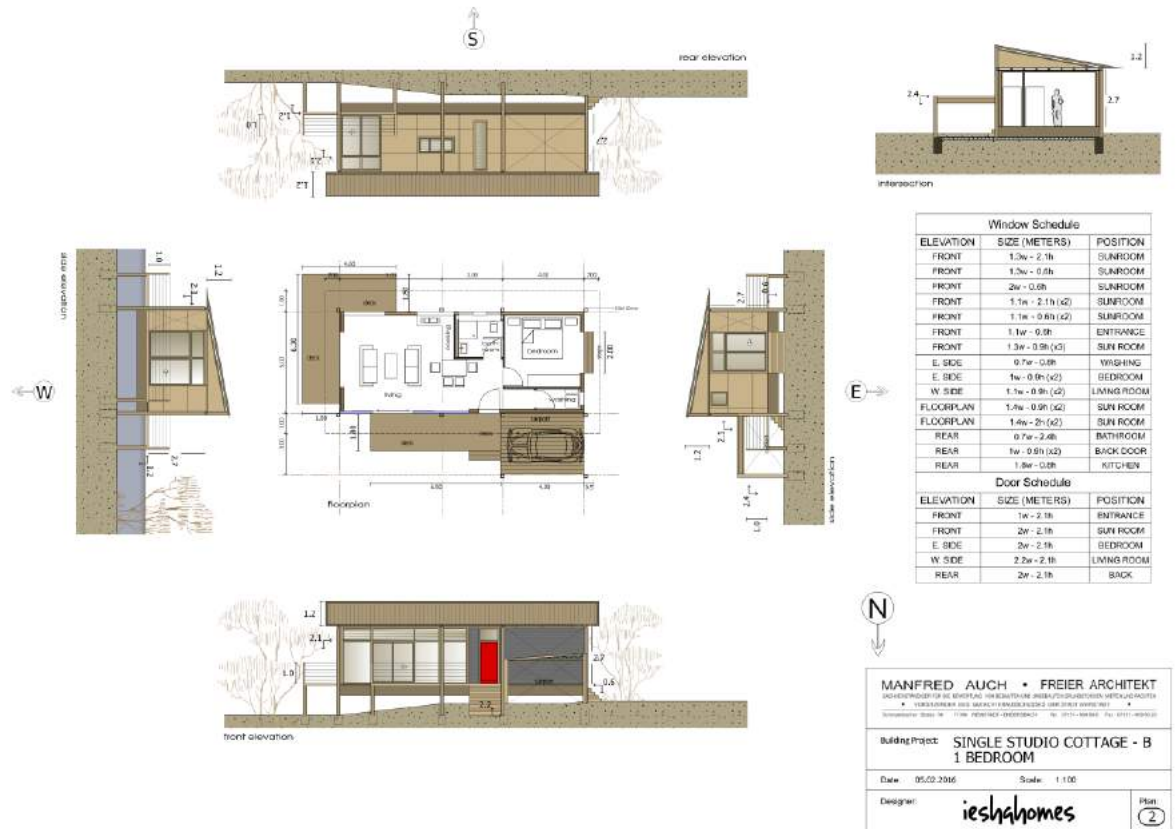
## 9. Layout Plans of IESHAHOMES 2017/18 range.

## 1 bed Studio Granny / Curved Roof:



## 10. Layout Plans of IESHAHOMES 2017/18 range.

## 1 Bed Studio Granny / Flat Roof:



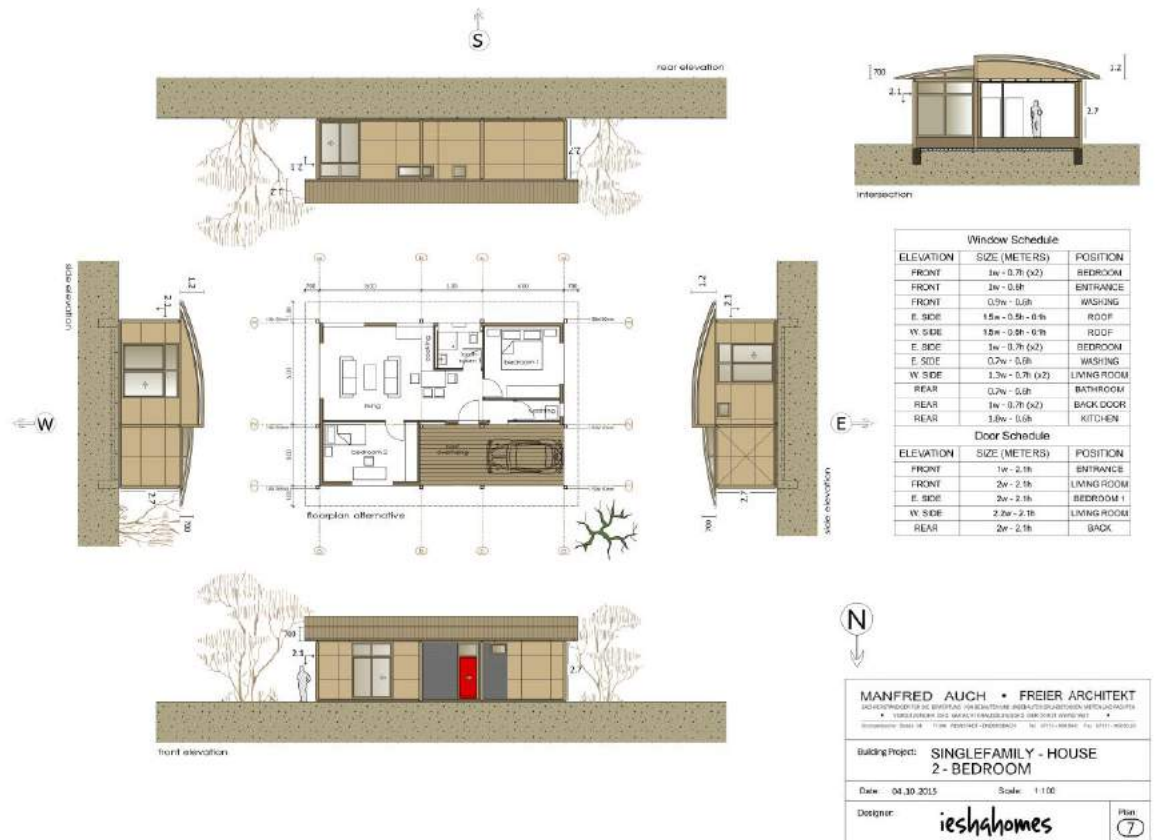
11. Layout Plans of IESHAHOMES 2017/18 range.

### Studio Granny / Curved Roof:



12. Layout Plans of IESHAHOMES 2017/18 range.

CURRENT NEW DISPLAY HOME BEING BUILT 2018 Range /Flat Roof:



**13. Flatpack Export Pricing:**

**Prices: No GST included. FOB.**

**1 Bed FR / Full Roof**

AUD\$167k

**1 Bed CR / Full Roof**

AUD \$172k

**2 Bed FR**

AUD \$186k

**2 Bed CR**

AUD \$191k

**3 Bed FR**

AUD \$198k

**3 Bed CR**

AUD \$203k

**4 Bed CR**

AUD \$214k

**Studio A FR**

AUD \$151k

**Studio A CR**

AUD \$156k

**Studio B FR**

AUD \$142k

**Studio B CR**

AUD \$147k

**2 Bed + Sunroom + extras (Display 2018)**

AUD\$197k

Price is For Flat Pack for concrete pad OR as a raised subfloor to 600mm (min). If you require a higher sub floor, then the prices will change.

All IESHAHOMES have a steel subfloor and skeleton frame (boxed steel)  
External design Included or can be optional /Decks/Steps (these are included in our costings).

**14. Shipping & delivery**

Houses require Flat Pack System

1 house = 2 FCL / Studio = 1 FCL

February 11<sup>th</sup> 2018 would be the delivery time due to the Christmas holidays in December

Ex Brisbane / Sydney / Christchurch / Auckland options

Letter of Credit

FOB

All pricing done on min quantity = 5 new homes

Pricing is for our 2018 range (Display now being built) see website Australia.

No GST applies

Freight Fwd. co based in Brisbane



**15. Warranty**

Manufacture Materials 15/25years \*conditions Apply\*  
 Our company 2 years' service  
 Certificates: AUS/NZ standards.  
 All components Australian or New Zealand sourced and made  
 Quality Precision Engineered Products

**16. Build assist services**

IESHAHOMES provide Build Assist services that support the construction of IESHAHOMES.  
 This is available by SKYPE / PH: / WEB / In person on site with you \*conditions Apply\*  
 These are FEE based (Reasonable) costs. You will receive 15hrs FREE with your order at our cost.

**17. Manuals:**

You will receive building manuals for all homes purchased (easy to use) English only  
 A video of the builds will also be provided

**18. Quick Key specs - see IESHA PACK for full inclusions and exclusions.**

- . Fully Engineered Steel House Skeleton made from high grade galvanized steel which include the sub floor. The sub floor can be a min of 400mm off the ground or set into concrete pad/floor. Maximum off the ground height is 2.6m.
- . High Grade SIPS System for Roof and Walls / Magnesium high finish / Range of thicknesses
- . R6 Rated thermal (if floor is insulated) or standard 4.5 to 6.5 depending on SIPS width.
- . All Aluminum Windows and Doors are High Quality SMART GLASS / Tinted to suit/ Hardened Glass. 2700h
- . All quality fixtures and fittings based on ABOVE average quality
- . Smart Kitchen PC system and Kitchen quality is ABOVE Average
- . Cyclone Rated standard C2 and up to C5
- . Earth Quake Rated N2 and if (if Seismic Steel is used) higher.
- . Flood resistant (if floods occur – only Kitchen is effected) and replaceable
- . Unique Storage Systems included HDS / LED lighting / Gas & electric Appliances
- . Decks and Hardwood decking / standard flooring

19. Invitation to represent IESHAHOMES export and handle sales and shipping to your region.

\*The director of IESHAHOMES would like to request consideration to the above\*.

20. Find attached is the IESHA PACK and Requirements Doc; please view and fill out as required.  
We can then provide \*confirmed fixed prices\*.

Thank You.

Jon Benelle  
Director  
IESHAHOMES